

Journal Assignment 1

Write in all-capital BLOCK-ARCHITECTURAL-LETTERING, the entire Alphabet, plus numbers 0 to 9

- A) Two times for 1/8" tall characters
- B) Two times for 1/4" tall characters
- C) Two times for 1/2" tall characters
- D) Two times for 1" tall characters

Reference your 499_Journal_READING_1_Architectural Lettering.doc

Journal Assignment 2

- 1) Draw in pencil directly on the following picture: (A) Guide-lines for **ONE-POINT PERSPECTIVE**, and (B) As many other important lines (straight and curved) as you believe are necessary to capture the essence of this image:



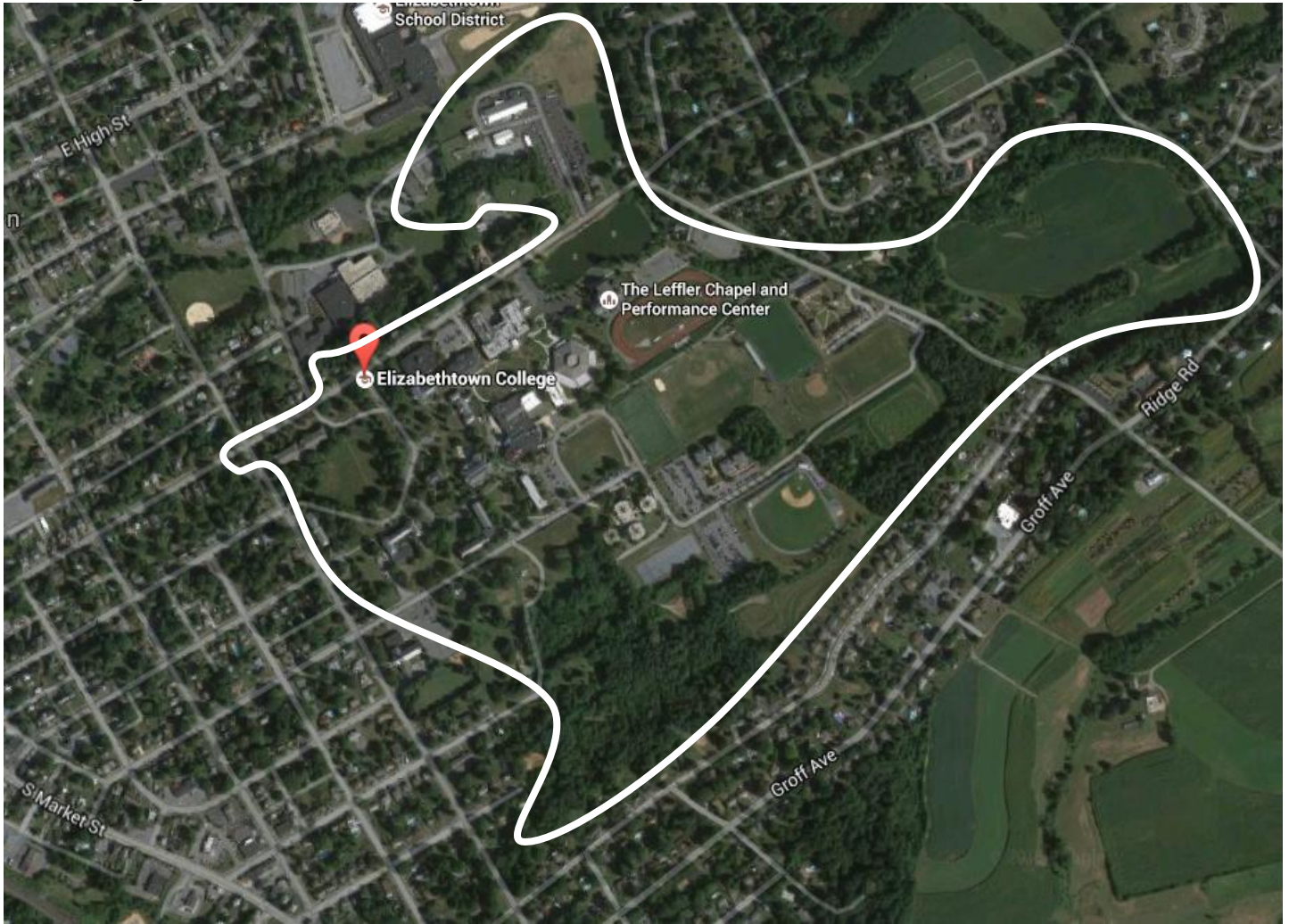
- 2) Re-draw in pencil the above picture with: (A) Guide-lines for **ONE-POINT PERSPECTIVE**; and (B) As many other important lines (straight and curved) as you believe are necessary to capture the essence of the image.

Journal Assignment 3

- 1) Draw in pencil directly on the following picture: (A) Guide-lines for **TWO-POINT PERSPECTIVE**, and (B) As many other important lines (strait and curved) as you believe are necessary to capture the essence of this image:



Re-draw in pencil the above picture with: (A) Guide-lines for **TWO-POINT PERSPECTIVE**; and (B) As many other important lines (strait and curved) as you believe are necessary to capture the essence of the image. You can omit the Train Engine from the drawing if you wish.



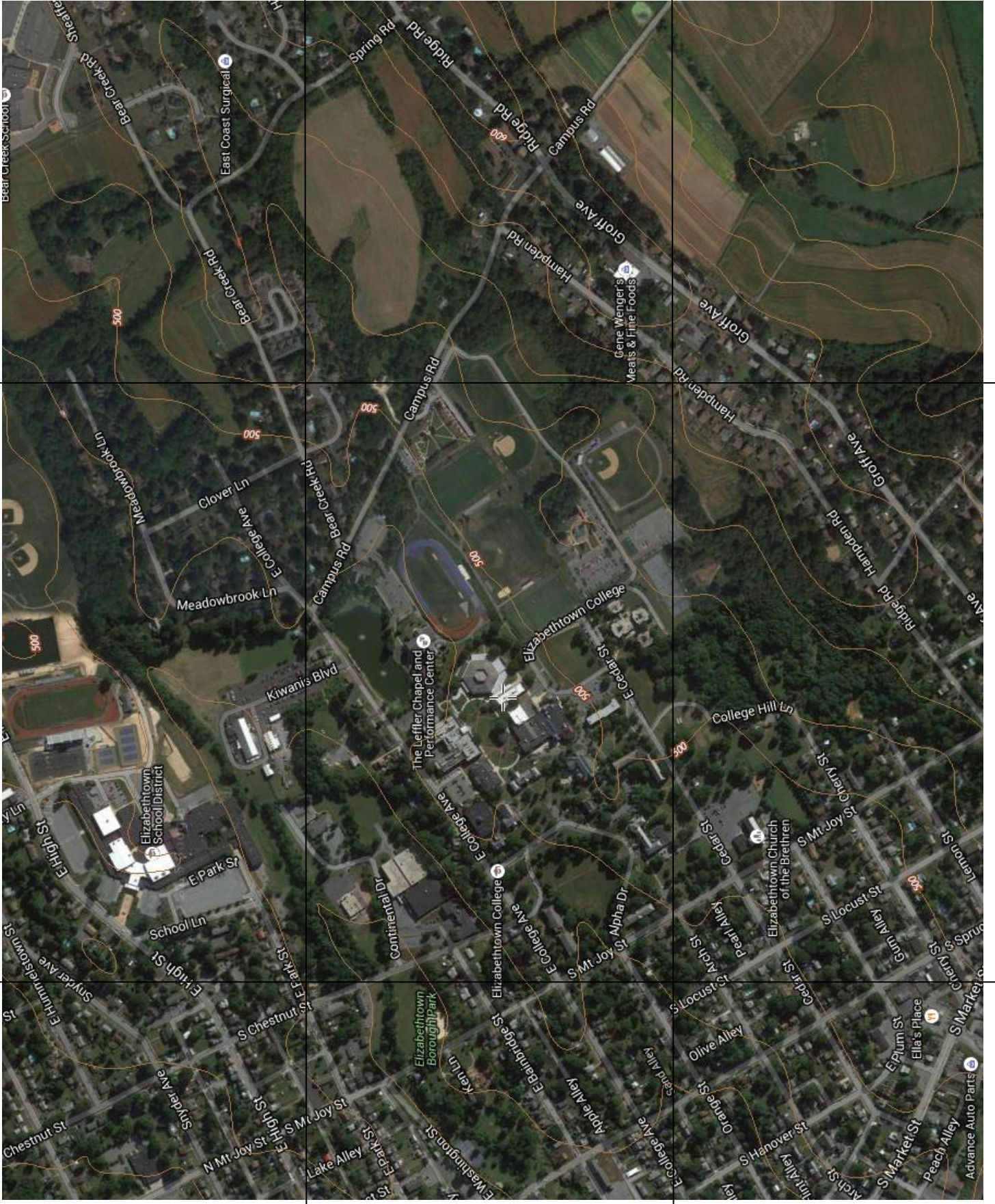
Using these images and the campus map handed out in class:

- 1) Sketch **our last walk-about the Campus**. First sketch footprints of the main buildings along our journey. Then with **bubble-clouds and arrows**, make notes of YOUR observations.
- 2) Sketch **YOUR most frequent PATHS and NODES** on Campus. First sketch the footprints of the main buildings along your typical journeys, then overlay circles for **NODES**, and lines for **PATHS**. Make the line width ("Weights") of your **NODE** circumferences and **PATH** thicknesses proportional to the magnitude of your activity.
- 3) Sketch your estimate of the **OVERALL STUDENT ACTIVITY PATHS and NODES** on Campus. First sketch the footprints of ALL the main buildings, then overlay circles for **NODES**, and lines for **PATHS**. Make the line width ("Weights") of your **NODE** circumferences and **PATH** thicknesses proportional to the magnitude of your estimate of overall student activity.



The Elizabethtown College Topographical Map shown on the next page has been divided into nine sections on the following pages.

1. Cut each section from the paper and lay them all together on a piece of Foam Board (Don't glue them; just connect them with tape spanning across the backs of the pieces. We may glue them to the foam board at a later date.
2. Using other foam board, cut pieces to represent the main buildings that you frequently go to at the College (don't glue them to the board, keep them separate in the baggy provided to you)
3. Using your personal Topographical Map, and your foam buildings, be prepared to show your classmates and Professor how you have most frequently used the Campus since you began at Etown. **TAKE A PHOTO OF THIS AND PUT IT IN YOUR JOURNAL.**
4. Using your personal Topographical Map, be prepared to show your classmates and Professor your estimate of present campus pedestrian traffic, and use of open spaces
5. Using your personal Topographical Map, be prepared to show your classmates and Professor your estimate how you would improve campus pedestrian traffic and use of open spaces – possibly with the construction of new Architecture, Landscape Architecture, and Urban Design (Just an oral description required for this exercise)

















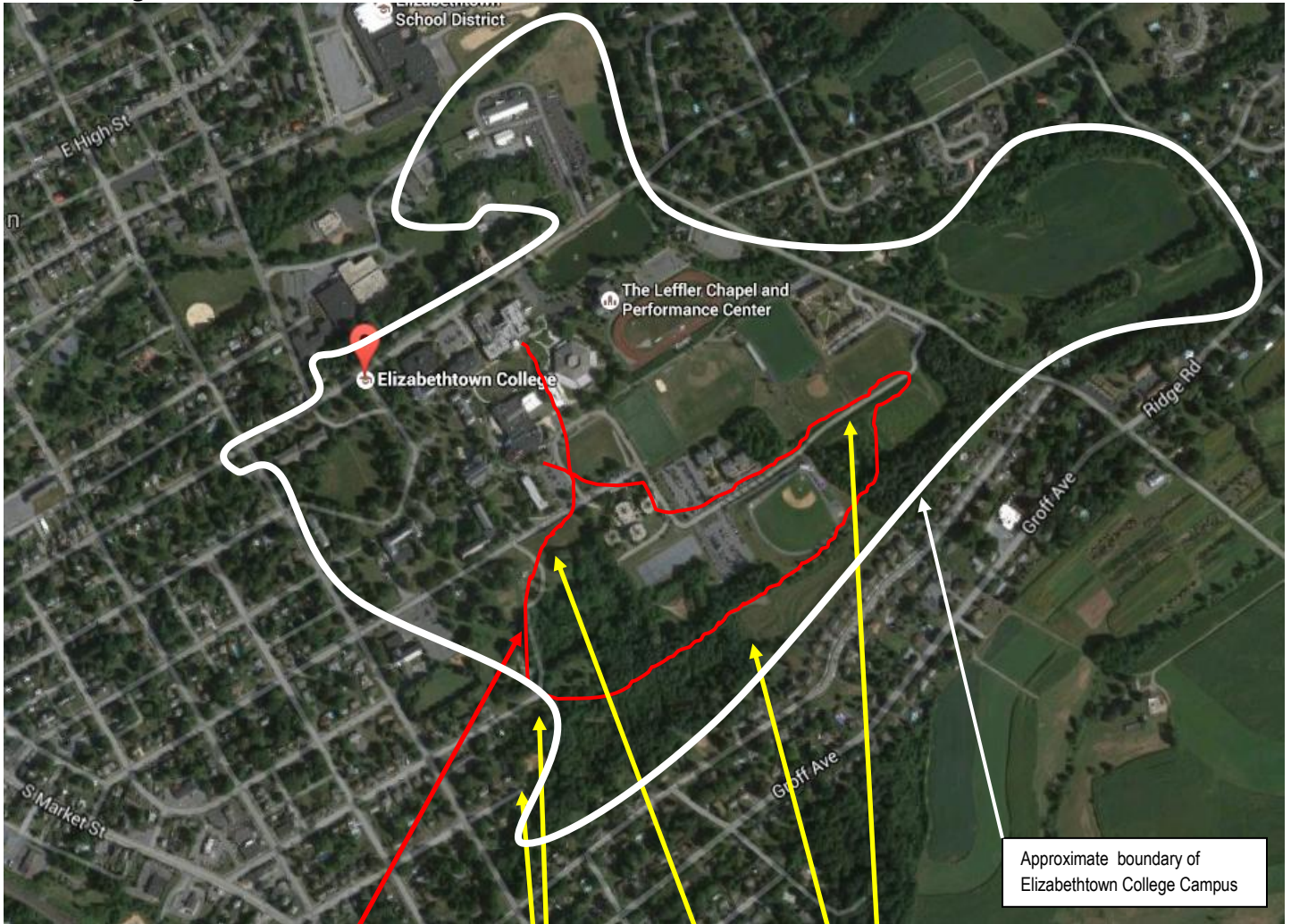


The following maps are for creating building models (i.e., to be glued onto small pieces of foam board)









Approximate boundary of Elizabethtown College Campus

Reflecting on our walk around the land at the South side of Campus

- 1) Write a paragraph about how you believe the land here could best be used (i.e., along paved path)
- 2) Write a paragraph about how you believe the land here could best be used (all the land in the woods)
- 3) Write a paragraph about how you believe the land here could best be used

4) Write a paragraph about how you believe the land here could best be used. Refer to use of Cherry Street or Lemon Street for a new campus entrance

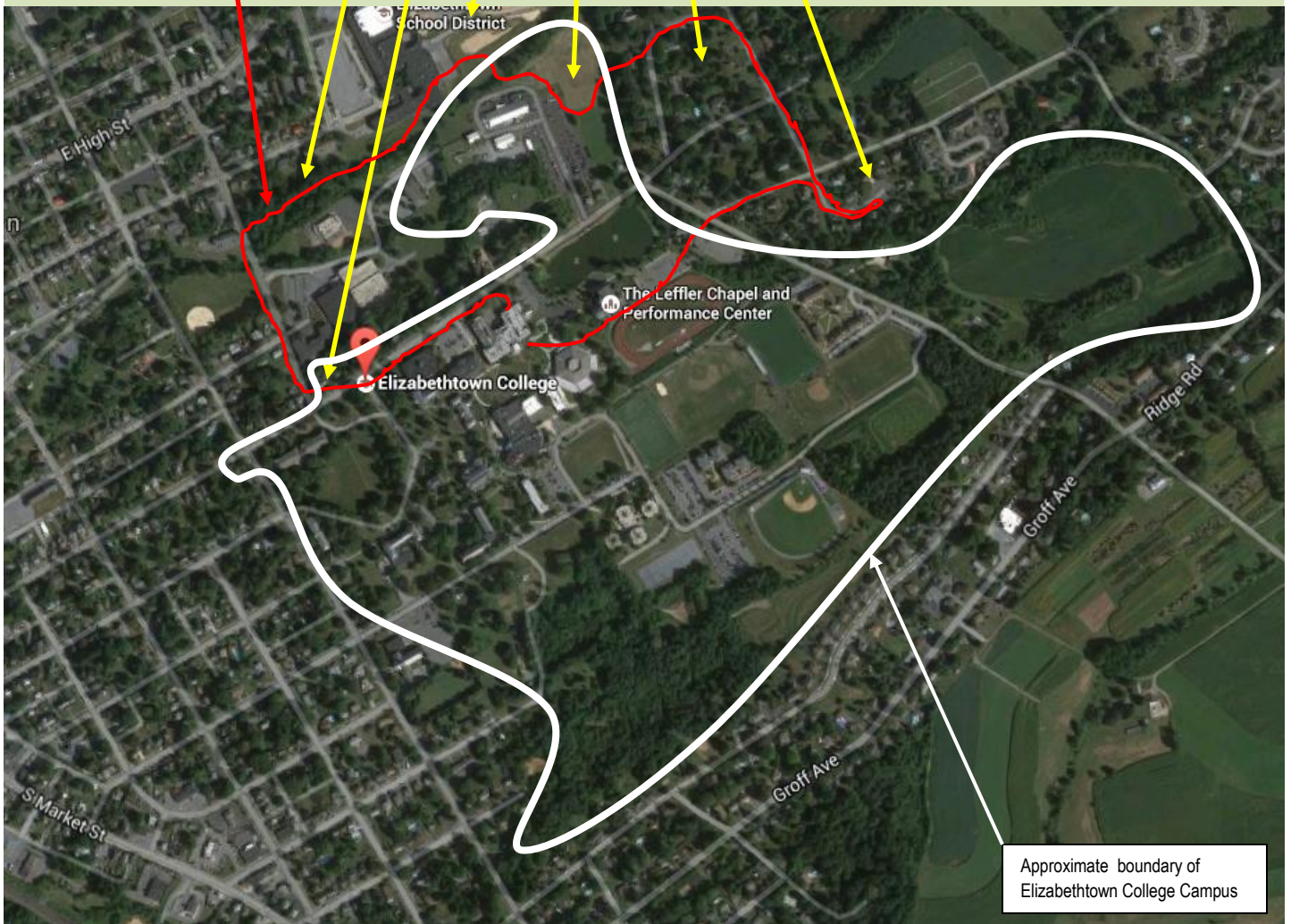


You may either type your answers, or use all-cap architectural hand-written lettering. You may enhance your assignment with more pictures and sketches.

Reflecting on our walk around the land at the NorthEast side of Campus

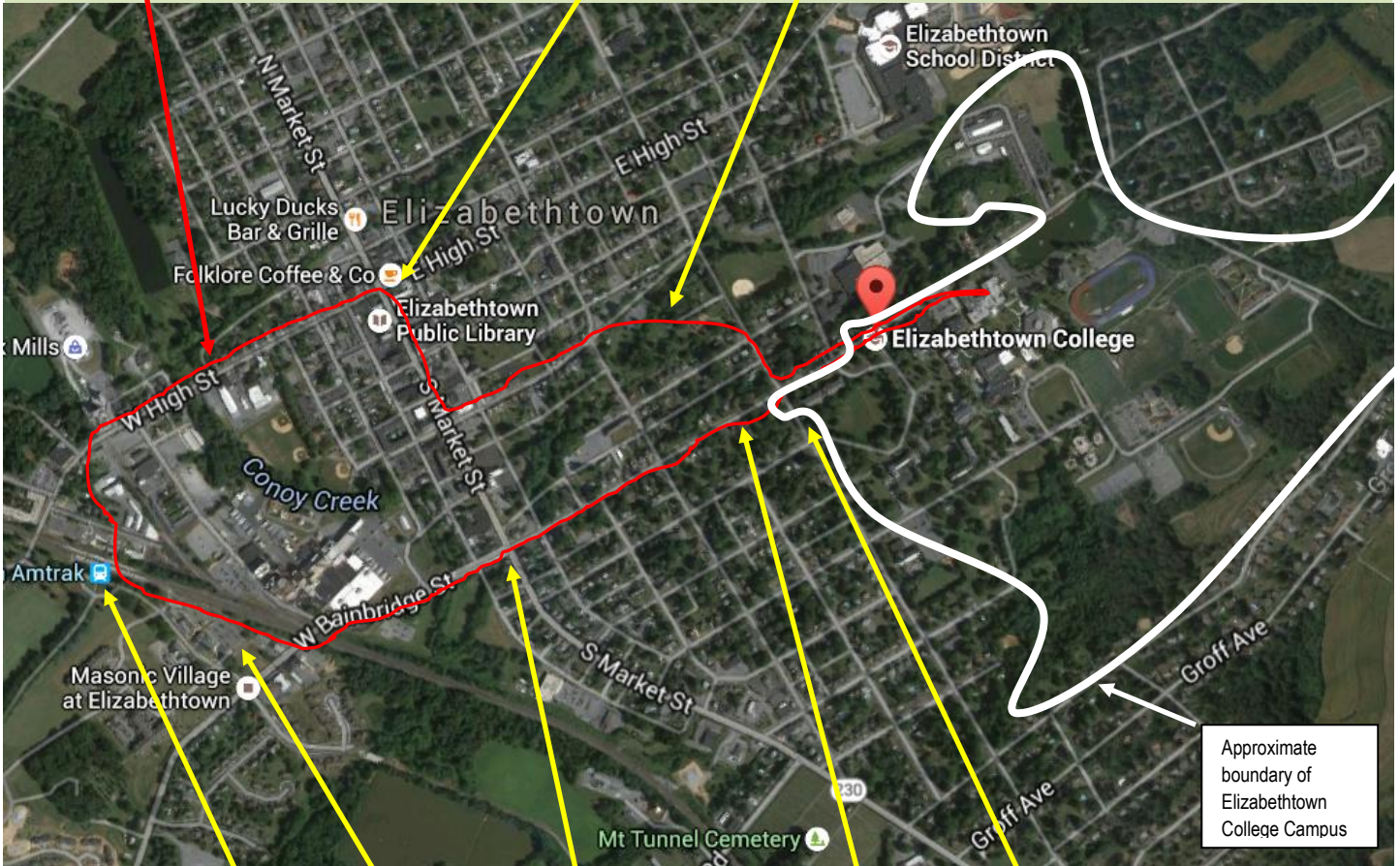
- 1) Write a paragraph about how you believe the land here could best be used (i.e., along the creek)
- 2) Write a paragraph about how you believe the Alumni House could best be used.
- 3) Write a paragraph about how you believe our College could share with the High School
- 4) Write a paragraph about how you believe the land here could best be used
- 5) Write a paragraph about this neighborhood
- 6) Write a paragraph about this neighborhood

You may either type your answers, or use all-cap architectural hand-written lettering. You may enhance your assignment with more pictures and sketches.



Reflecting on our walk from Campus to Town

- 1) Write a paragraph about how the College could make use of the Park
- 2) Write a paragraph about how the Town Center could be improved



- 3) Write a paragraph about the Train Station
- 4) Write a paragraph about the repurposing of this property
- 5) Write a paragraph about College Avenue including the Market Street Intersection, the location of the President's House, and the main Campus sign

You may either type your answers, or use all-cap architectural hand-written lettering. You may enhance your assignment with more pictures and sketches.

Journal Assignment 9

- A) Read all of the maps attached
 - a. Also found in Dr. W public folder: 499_Journal_READING_9_1999_Master_Plan_Analylis.pdf
- B) Discuss with a partner in class all of the things that you can see have changed on campus since this 1999 Master Plan Campus Analysis was completed.
- C) After class, type at least three paragraphs about all of the things that you can see have changed on campus since this 1999 Master Plan Campus Analysis was completed.

Journal Assignment 10

- E) Read all of the maps attached; They can also be found in Dr. W public's folder:
 - 499_Journal_READING_10_1999_Master_Plan_Proposed Changes.pdf
 - a. 499_Journal_READING_10_1999_Master_Plan_Proposed Changes_PHASES.pdf
- F) Discuss with a partner in class all of the things that you can see have been implemented on campus since these 1999 Master Plan proposed changes were documented.
- G) With a partner in class, critique all of the proposed ideas, and think of alternatives
- H) After class, type at least three paragraphs about all of the things that you can see have been implemented on campus since these 1999 Master Plan proposed changes were documented, critique all of the proposed ideas, and discuss alternatives